



# STRUTTURA VS FUNZIONE





# COME LA STRUTTURA INFLUENZA LA FUNZIONE

INNERVAZIONE

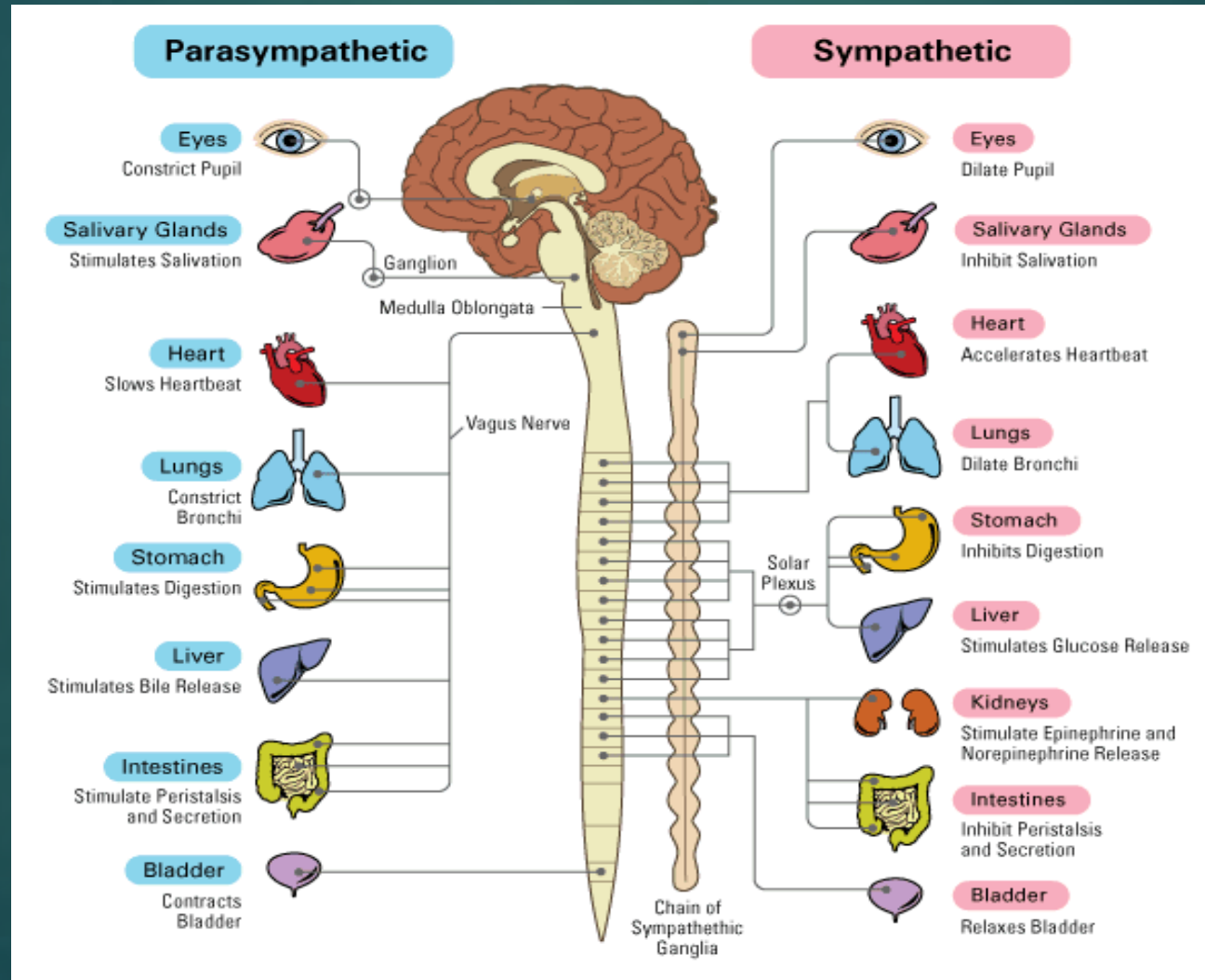
POSIZIONE

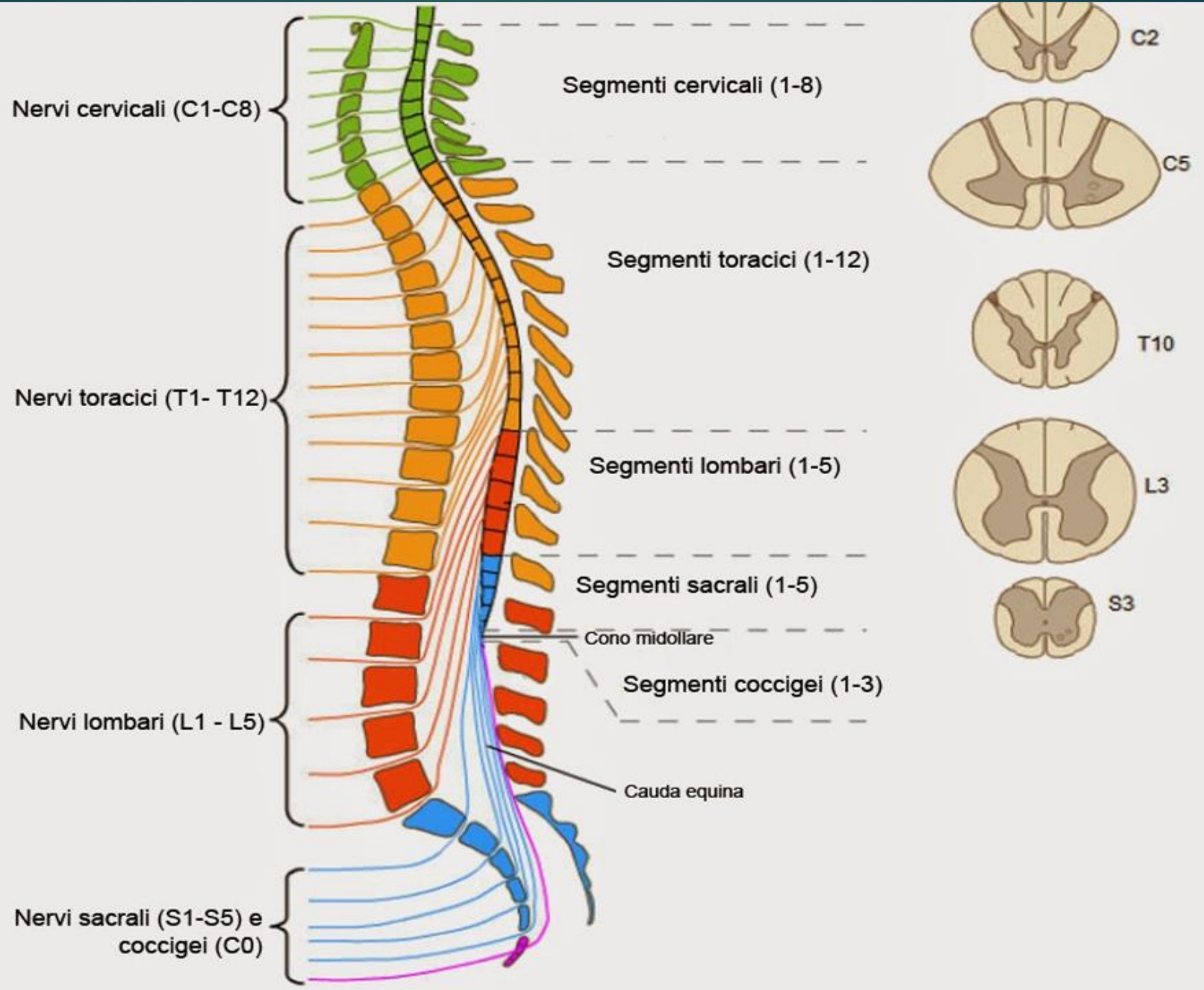
COMBINAZIONE DELLE DUE COMPONENTI

# INNERVAZIONE

- ▶ SISTEMA NERVOSO AUTONOMO PARASIMPATICO  
REST AND DIGEST
- ▶ SISTEMA NERVOSO AUTONOMO ORTOSIMPATICO  
FIGHT OR FLIGHT

# SISTEMA NERVOSO AUTONOMO





Nervi cervicali (C1-C8)

Segmenti cervicali (1-8)

C2

Nervi toracici (T1- T12)

Segmenti toracici (1-12)

C5

T10

Segmenti lombari (1-5)

Nervi lombari (L1 - L5)

Segmenti sacrali (1-5)

L3

Cono midollare

Segmenti coccigei (1-3)

S3

Cauda equina

Nervi sacrali (S1-S5) e coccigei (C0)





# INNERVAZIONE MECCANICA LESIONALE

- ▶ STIRAMENTO : 1 DANNO MECCANICO  
2 DANNO METABOLICO  
dr Shokei Yamada ,dr Alf Breig

- ▶ COMPRESSIONE

- ▶ DOPPIA COMPONENTE

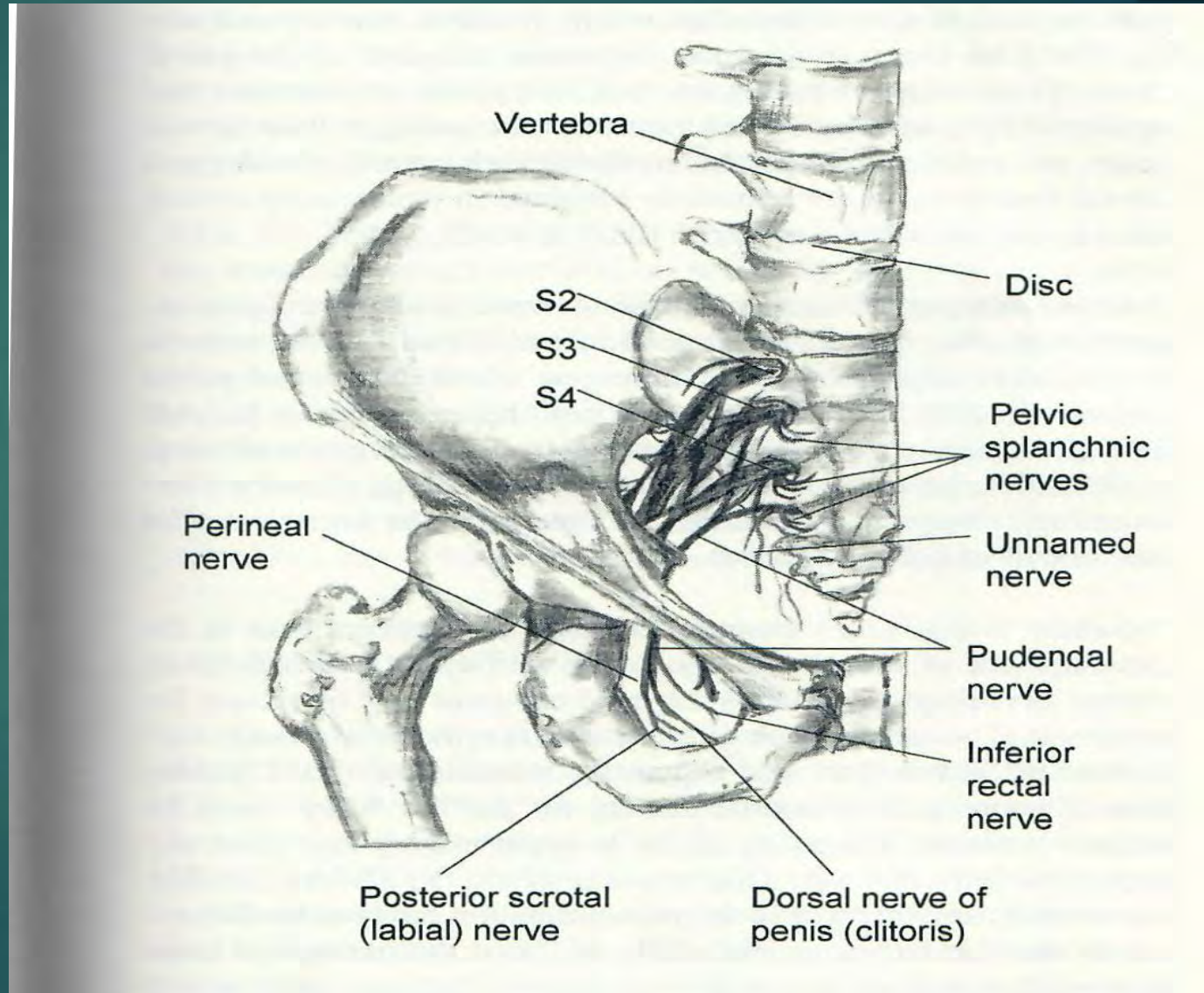
FACILITAZIONE

INIBIZIONE

EFFETTO COMBINATO

# NERVI SACRALI

- ▶ SPLANCNICO PELVICO
- ▶ INNOMINATO
- ▶ PUDENDO







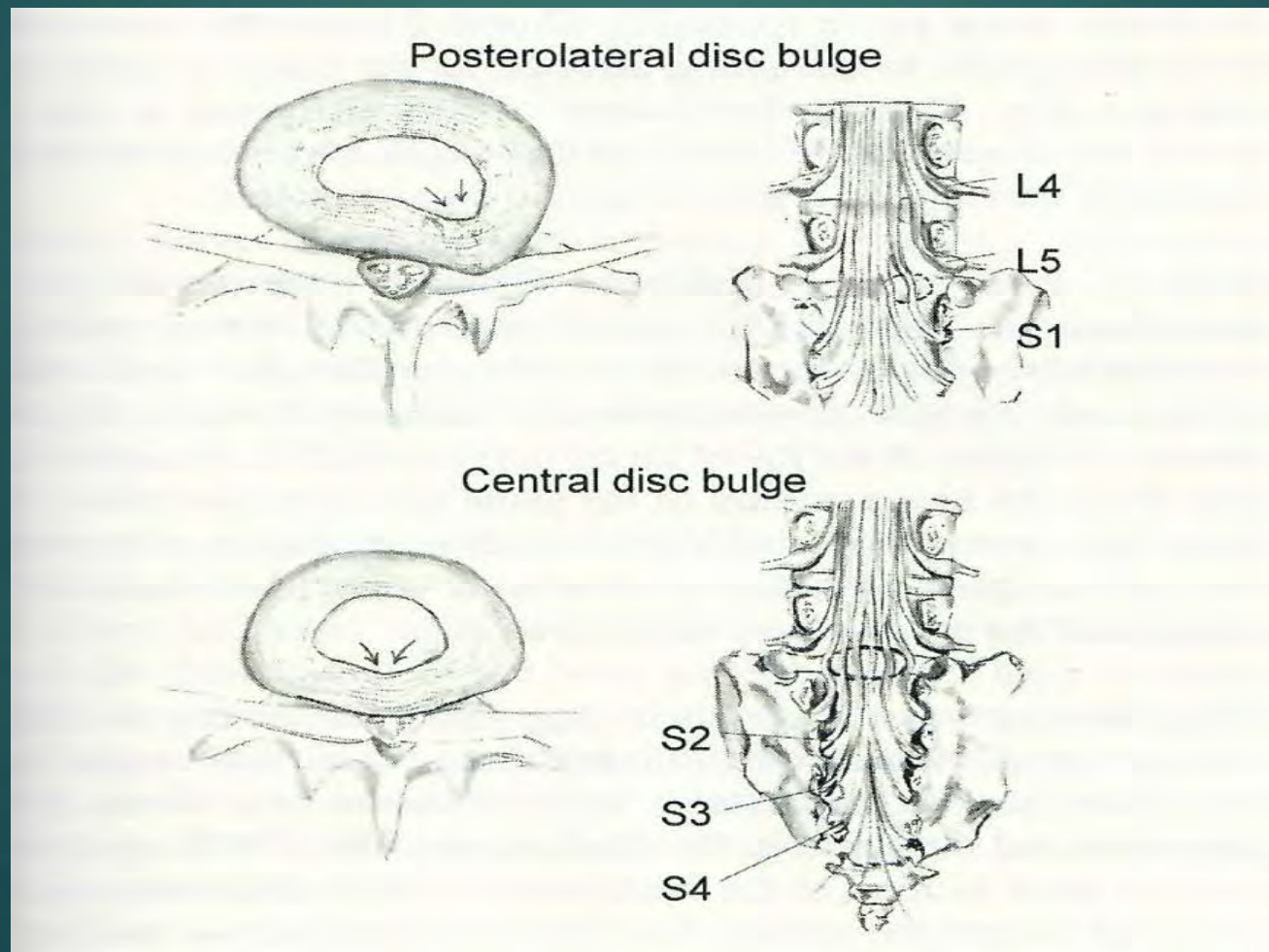


► Splancnico pelvico :

Controllo parasimpatico con azione visceromotoria del colon discendente, retto, vescica, uretere . Vasodilatatoria e secreto motoria degli organi genitali.

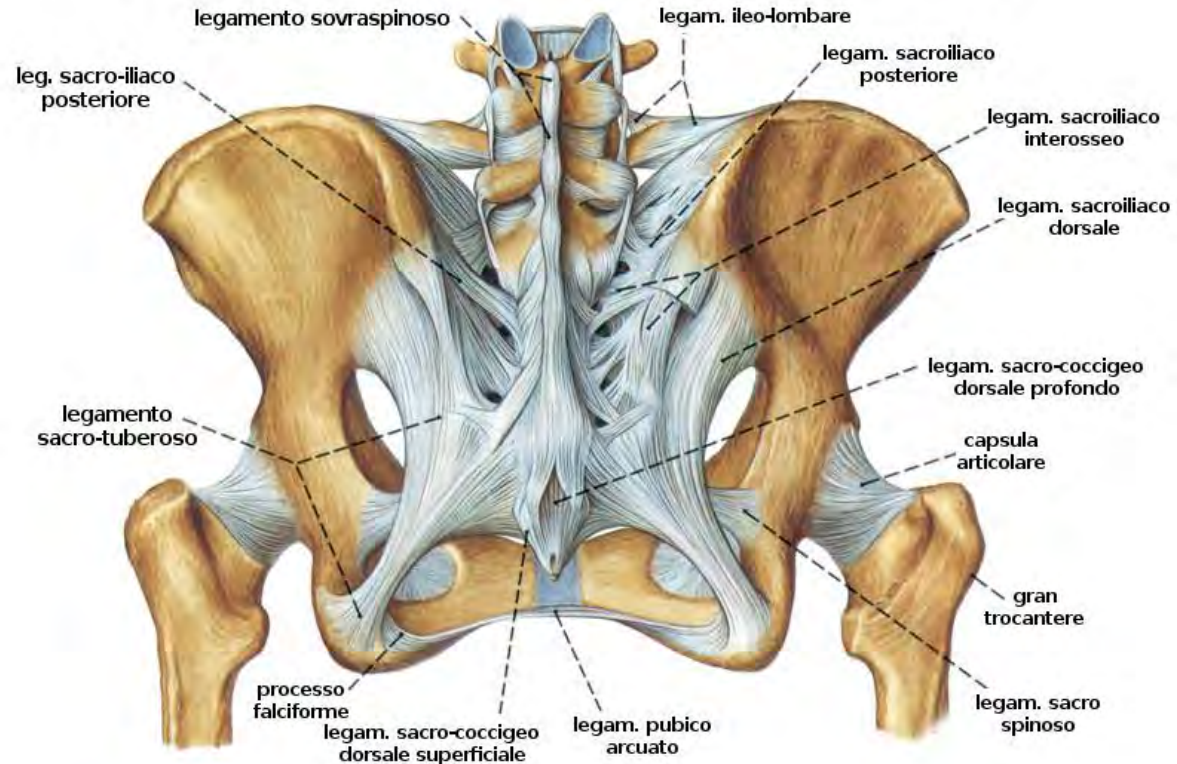
- 
- 
- ▶ Pudendo :innervazione motoria e feedback sensoriale dello sfintere anale esterno, apparato genitale e muscoli del pavimento pelvico
  - ▶ Innominato: innervazione motoria e sensoriale elevatore dell'ano, coccigei, sfintere anale esterno

# DISCOPATIA LOMBARE COMPRESSIONE DEI NERVI SACRALI



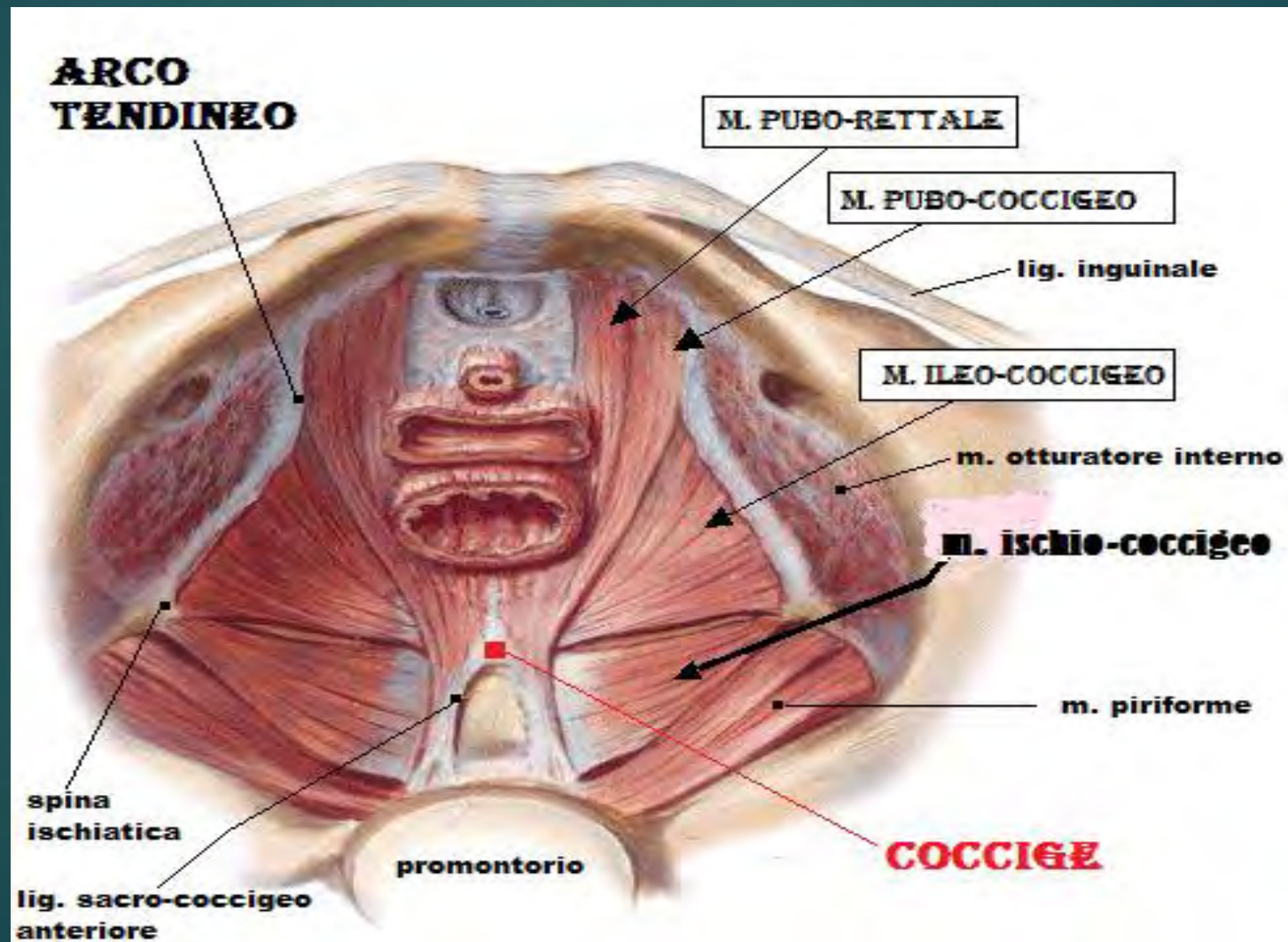
# DISCOPATIA LOMBARE E INSTABILITA' PELVICA

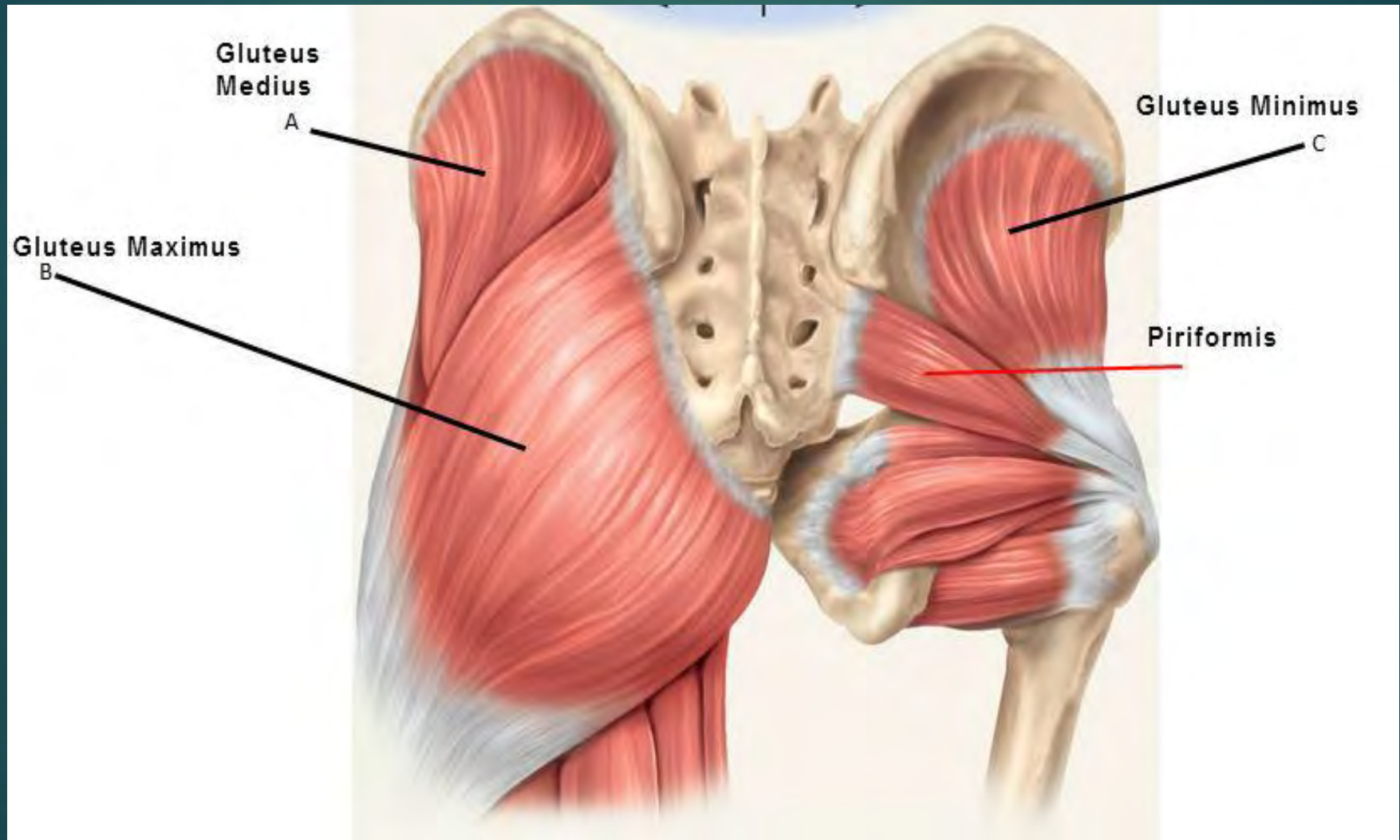
## LEGAMENTI DELLA PELVI - Vista posteriore





# PAVIMENTO PELVICO





# referenze:

- ▶ 1 ADVERSE MECHANICAL TENSION ON THE CENTRAL NERVOUS SYSTEM dr Alf Breig 1978
- ▶ 2 SKULL TRACTION AND CERVICAL CORD INJURY dr Alf Breig 1989
- ▶ 3 TETHERED CORD SYNDROME dr Shokei Yamada 1996
- ▶ 4 PELVIC PAIN AND ORGANIC DYSFUNCTION James Browning ,DC
- ▶ 5 MICROBIOTA INTESTINALE dr Luciano Lozio 2011

# referenze

- ▶ Hyperkyphotic Posture Predicts Mortality in Older Community-Dwelling Men and Women: A Prospective Study
- ▶ Authors :
- ▶ Deborah M. Kado MD, MS,
- ▶ Mei-Hua Huang DrPH,
- ▶ Arun S. Karlamangla MD, PhD,
- ▶ Elizabeth Barrett-Connor MD,
- ▶ Gail A. Greendale MD
- ▶ Atlas of Common Subluxations of the Human Spine and Pelvis 1st Edition
- ▶ by William J. Ruch



# references

- ▶ Warwick R, Williams P. Gray's Anatomy.1973
- ▶ Beersiek F, Parks AG, Swash M. Pathogenesis  
▶ Of anorectal incontinence. J Neurol Sci 1979
- ▶ Hockman CH. Essentials of autonomic function.
- ▶ Anderson RS. A neurogenic element to urinary  
genuine stress incontinence. Br J Obstet  
Gynaecol 1984
- ▶ Carpenter MB. Human Neuroanatomy.Seventh  
ed. Baltimore, Williams and Wilkins.
- ▶ Haerer AF. DeJong's The Neurologic  
Examination. Fifth ed. J.B. Lippincott Company